

DISCOVER ANTARCTICA

Departing from Ushuaia
11 Dec – 21 Dec 2021 (11 Days)

OVERVIEW

Enter a spellbinding world of snow and ice as you voyage to Antarctica, the world's final frontier – a continent that has lured intrepid explorers for centuries and now draws travellers with a taste for adventure. Set sail aboard the comfortable, spacious and well-appointed Ocean Endeavour for this exclusive 11-day voyage to the White Continent. Stark, hauntingly beautiful, surreal, breathtaking – words cannot adequately describe the sights and sounds of this pristine, remote landscape. This is a true ice wilderness, one where you will be surrounded by penguins, seals, whales and seabirds, set against a backdrop of towering, sculpted icebergs, snow-capped peaks, imposing glaciers and ice-choked waters. The wildlife viewing is unparalleled, as is the majestic scenery.

This is a once in a lifetime voyage to the world's final frontier.

HIGHLIGHTS

- Unspoiled wilderness, uninhabited by man, where the penguins, seals, whales and seabirds are the true rulers.
- Experience the White Continent and encounter an incredible variety of wildlife.
- Take in the Sub-Antarctic South Shetland Islands and the spectacular Antarctic Peninsula.
- Admire breathtaking scenery such as icebergs, glaciated mountains and volcanoes.
- Enjoy daily zodiac excursions and on-shore landings.
- Benefit from a variety of on-board activities including educational lectures on history, geology and ecology by the expedition team.
- Take advantage of optional activities during the voyage such as kayaking and snowshoeing.
- Enjoy the amenities onboard including expedition lounge, restaurant, bar, pool, jacuzzi, library, gym, sun deck, spa facilities and sauna.



ITINERARY



DAY 1 - USHUAIA, ARGENTINA

On arrival at Ushuaia Airport, please make your way through to the Arrivals Hall where our representative will be waiting for you to transfer you to your hotel. He/she will be holding a sign with your name on it. Should you not be able to contact them, please refer to the front of your itinerary for emergency contact details of our representative office.

The first night of your voyage is spent in the quaint town of Ushuaia, the most southerly city in the world and the capital of Tierra del Fuego (Land of Fire).

The remainder of the day is at leisure and you are free to explore, maybe making a few last-minute purchases from the many shops or artisan markets, or relaxing in a café. Avenida San Martin is the main street and there are some excellent museums to visit or you may prefer to wander the streets taking in the town's dramatic setting, with views of the mountains to the north and the Beagle Channel to the south.

DAY 2 – EMBARKATION IN USHUAIA

This morning is again free for you to explore Ushuaia further, or maybe discover Tierra del Fuego National Park, the most southerly national park of South America. The park offers a range of hiking trails that lead you through the stunningly beautiful and dramatic scenery of snow-capped peaks, lush meadows, rugged coastline, glaciers, waterfalls and lakes. Look out for guanaco, Andean foxes, muskrats and the North American beaver. Birds found here include the Andean condor, Magellanic oystercatcher, kelp goose, austral parakeet and torrent duck.

Late this afternoon we transfer to the port of Ushuaia in time for embarkation on board the Ocean Endeavour. The Expedition Team and the Ship's Officers will be waiting to welcome us aboard. As we set sail, familiarise yourself with the layout of the Ocean Endeavour and its great amenities and enjoy a welcome dinner.

This evening we sail along the wildlife-rich Beagle Channel, towards the White Continent of Antarctica. As we leave the lights of Ushuaia behind, look out for

Magellanic penguins, rock cormorants, petrels and black-browed albatross from the deck as well as noisy sea lion colonies.

DAY 3 & 4 – AT SEA, DRAKE PASSAGE

The infamous Drake Passage, named after the famous English explorer, Sir Frances Drake, separates the tip of the Antarctic Peninsula from the southernmost tip of South America. It is often rough and turbulent, but sometimes as calm as a lake. It is unpredictable, so be prepared!

Enjoy the fabulous onboard facilities, maybe join a yoga class, attend a presentation or two given by the Expedition Team to prepare you for what lies ahead – from the geology of Antarctica to the history, wildlife and even the ice!

As we sail towards Antarctica, there is a fall in temperature as we cross the Antarctic Convergence and enter the waters of the Antarctic Ocean. The Antarctic Convergence is marked by an increased number of seabirds, whales and other species that are attracted by the nutrient-rich waters pushed to the surface by the colder waters of the polar region flowing north and meeting the warmer equatorial waters flowing south.

Head out on deck to look out for the mighty albatrosses that fly overhead, scan the waters for breaching whales and icebergs, or gaze out from the panoramic windows of the observation deck. Keep on the lookout for the first sighting of land – that heralds your arrival to the White Continent!

DAY 5-8 – SOUTH SHETLAND ISLANDS & ANTARCTIC PENINSULA

The next four days are spent exploring the South Shetland Islands and Antarctic Peninsula, a region that has captivated explorers for centuries and now enthralled travellers. We explore by Zodiac, cruising amongst the magnificently sculpted icebergs and making shore landings where we mingle with penguins, climb to vantage points to absorb the spectacular panoramic views, maybe visiting a scientific or historic base.



ITINERARY

There may even be opportunities to kayak and snowshoe and of course learn more about photography with one of the experts.

Antarctica will enchant you with its incredible scenery, from imposing glaciers to towering snow-capped peaks, vast icebergs and ice-strewn channels. Not to mention the wildlife – from extensive colonies of chinstrap, Gentoo and Adelie penguins, to crabeater, Weddell, fur and elephant seals and a plethora of fascinating birds. Keep your eyes and ears peeled for the mighty crack of a glacier calving. Maybe you will be one of the brave few to take a polar plunge in the icy waters! Every day brings a new experience and new landing site.

As we cruise from one landing site to the next, enjoy the continued lecture programme and take in the scenery from the outer decks of the Ocean Endeavour. Make the most of the health and fitness facilities from the relaxing spa and saunas to the pool and gym.

DAY 9 & 10 – AT SEA, DRAKE PASSAGE

As we leave the Antarctic Peninsula behind, we take with us our memories and photographs. We set a course for the Drake Passage as we enjoy some final lectures and presentations and look out for wildlife from the observation lounge and the outer decks.

Having crossed the Drake Passage once more, we enter the calm and tranquil waters of the Beagle Channel bound for Ushuaia.

DAY 11 – DISEMBARKATION IN USHUAIA, ARGENTINA

We are scheduled to arrive into Ushuaia early this morning, and we disembark after a final breakfast aboard the Ocean Endeavour.

After saying our farewells to our Expedition Team and the crew of the Ocean Endeavour, we transfer you to the airport for your onward flight, or you may like to spend some extra days in Ushuaia, giving you time to explore this fascinating town and the surrounding areas.

PLEASE NOTE: You are advised not to book a flight out of Ushuaia before midday on disembarkation day, in case of delays caused by unfavourable weather conditions.



INCLUSIONS

- 1 night hotel accommodation with breakfast in Ushuaia
- Group transfer from hotel to pier
- Shipboard accommodation
- All meals whilst on-board including snacks
- All shore excursions and zodiac cruising (*excluding forward facing zodiac)
- Guiding and lectures by expedition team
- English-speaking expedition team
- Free use of rubber boots on land
- Use of gym, sauna, pool and on-board Jacuzzi
- On-board yoga
- Wind and water resistant jacket
- All Port taxes
- Transfer airport to hotel on day 1 and pier to airport on day of disembarkation

EXCLUSIONS

- Airfares to/from embarkation and disembarkation city
- Visa fees (if applicable)
- Travel Insurance
- Beverages (other than coffee and tea)
- Personal expenses such as laundry, on-board communication (telephone calls, faxes, email service)
- Gratuities for the crew (recommended US\$15 per person per day)
- Optional Activities whilst on-board

OPTIONAL ACTIVITIES

Approaching a looming glacier in a kayak, strapping on snowshoes to reach the best icy viewpoints, capturing the perfect photo of a seal hunting its prey or camping under an Antarctic night sky – these are just some of the ways you can enrich your exploration of the great White Continent with our additional activities. Activities are subject to availability and voyage type so please contact us to find out more. We recommend booking early to avoid disappointment.



Kayaking

Under full instruction from our sea kayaking guide, experience true tranquillity as you paddle through clinking ice floes and realise the enormity of the surrounding scenery. Look out for breaching whales, lounging seals and penguins zipping alongside your kayak. Some experience is recommended.



Camping

Camp out on the ice for a night and witness the darkness and silence which blankets the continent by night. This is your chance to completely connect with this ethereal ice world – wrap up warm and embrace the Antarctic elements until dawn.



Snowshoeing

Get a spring in your step when you slip on a pair of snowshoes in Antarctica. Enabling you to easily scale gentle slopes, this unique activity allows you to access hard to reach places and seek out the most impressive views.



Private Photography Workshop

Learn to capture wildlife and landscape shots in a small group photography programme, including critiquing sessions and editing classes. Plus, forward facing Zodiac excursions with a dedicated photography expert on landings.



Forward facing Zodiac

Achieve the best views and photographs from a forward facing Zodiac. They allow you to sit comfortably and securely while crackling through the ice-strewn waters. Look out for wildlife such as penguins, seals and whales as you cruise.

OCEAN ENDEAVOUR: COMFORT & ADVENTURE

The Ocean Endeavour allows you to explore Antarctica while enjoying the class and comfort of a four-star hotel. Featuring one expedition team member for every eight travellers, you can take full advantage of one of the best staff-passenger ratios in Antarctica, with a greater level of personal service and more time with our onboard experts. Complete with contemporary interiors, lounges for learning and reflection, Zodiacs for remote exploration, breath taking 360° views from the deck, an emphasis on sustainability and exciting activities, the Ocean Endeavour is ideally suited for polar expedition cruising.



BENEFITS

- Travellers will enjoy one of the best expedition staff to passenger ratio (1:8) in Antarctica.
- Book a single occupancy cabin for the price of an interior twin share berth.
- Our strict sustainable travel policy means these cruises are double carbon offset, all seafood is sustainably sourced and we aim to avoid single-use plastic on board.
- A large fleet of Zodiacs enables all passengers to be off the ship at one time. There are also two gangways on each side of the vessel to minimise queuing.
- Forward facing photography Zodiacs are available. These Zodiacs are designed for comfort and uninterrupted views.
- Passengers can enjoy educational lectures from our expert expedition team on the history, ecology and geology of the area.
- A variety of health and wellness activities are available on board, including a sauna, saltwater swimming pool, spa and gym.
- A wide range of optional outdoor activities are on offer, including snowshoeing, camping and kayaking.
- Chef-prepared meals.
- One night in a hotel in Ushuaia included at the start of the trip.
- Extensive amenities including a restaurant, polar boutique, expedition lounges, bar, sun deck and library.

WHY WE LOVE THIS SHIP?

"We think the Ocean Endeavour is the ultimate expedition cruising ship. Strong, stable and with plenty of creature comforts, you will feel at home. A huge range of activities both on and off the ship make her versatile and appealing to clients of all ages and budgets. Not to mention the large Zodiac fleet, boarding on both sides of the vessel, and access to the unique forward-facing seating." Chad Carey and Greg Carter.



TECHNICAL SPECIFICATIONS

Name of Vessel: The Ocean Endeavor
Type of Vessel: Ice strengthened expedition vessel

MAIN DIMENSIONS

Built: Poland 1981
Ice Class: 1B
Length: 137m (332ft)
Breadth: 11m (36ft)
Max Draft: 5.6m (18ft)
Cruising Speed: 15 knots
Propulsion: 4 Skoda Sulzer engines (4,355 horsepower per engine)
Electricity: 220 volts/60Hz
Passenger Capacity: 200 (maximum)
Crew: 124

SAFETY EQUIPMENT

Lifeboats: 6
Life rafts: 8

SAFETY FEATURES

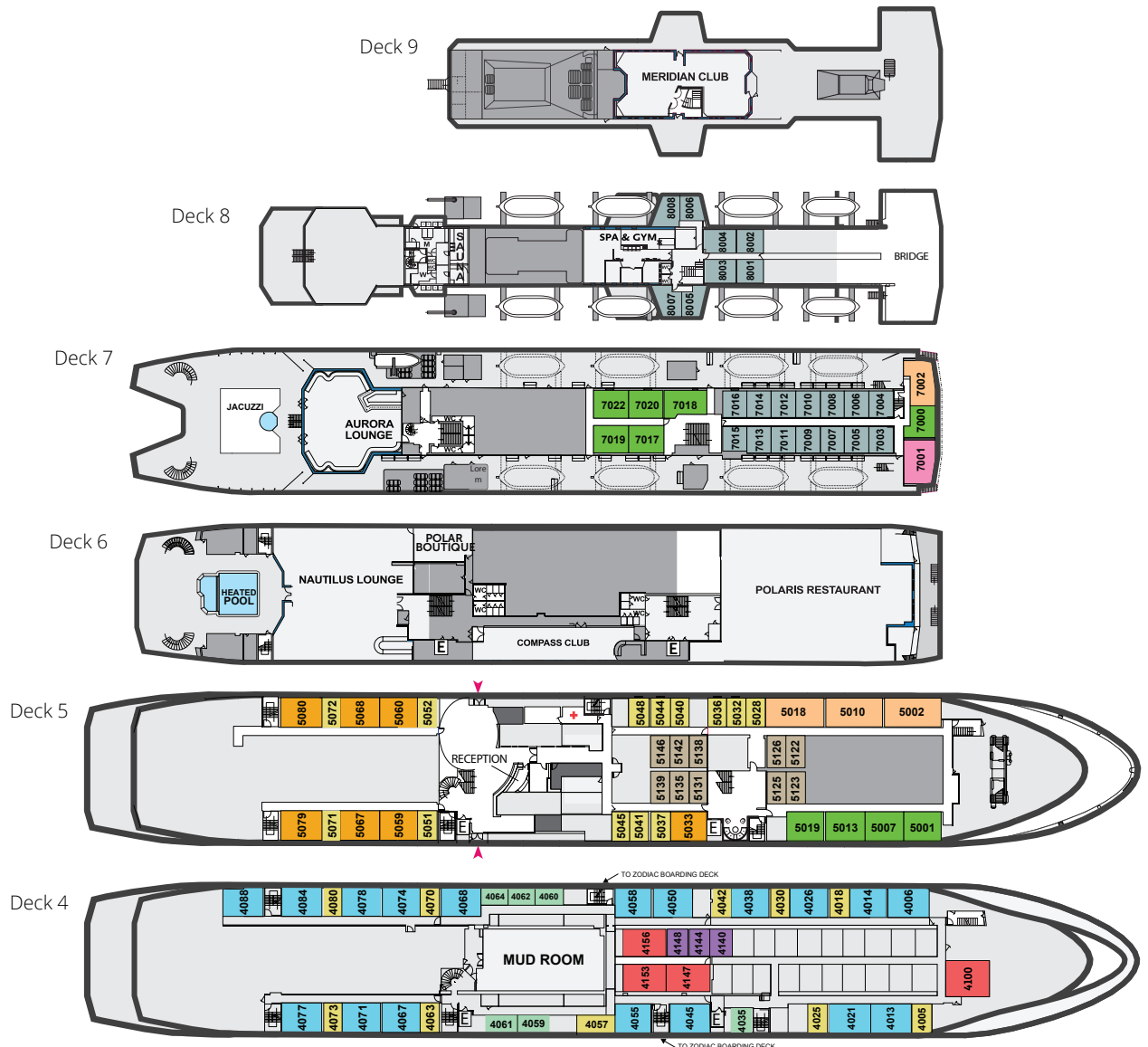
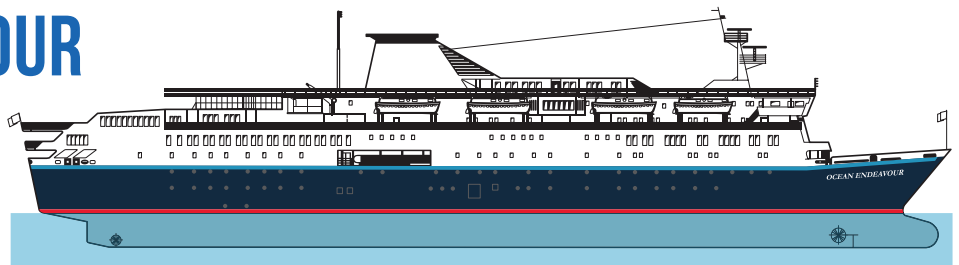
The Ocean Endeavour carries six fully enclosed lifeboats and eight life rafts. The capacity for which exceeds SOLAS requirements, with at least 25% more space than the number of passengers and crew on board. It also has an ice-strengthened hull.

AMENITIES

- Restaurant
- Nautical lounge
- Polar library
- Gym
- Swimming pool
- Saunas
- Spa facilities
- Lecture theatre
- Polar boutique
- Sun deck and plenty of deck space for observation
- Elevator access (Decks 4, 5 and 6)
- Clinic with licensed Doctor
- Wi-Fi in certain public areas (charges apply)
- 24-hour tea and coffee available
- Onboard laundry service (charges apply)

OCEAN ENDEAVOUR

DECKPLAN



CATEGORY 1 SINGLE INTERIOR

Deck 5 (10): Interior cabin, 2 lower berths, private bathroom.

CATEGORY 2 TRIPLE INTERIOR

Deck 4 (4): Interior cabin, three lower berths, private bathroom.

CATEGORY 3 TWIN INTERIOR

Deck 4 (3): Interior cabin, 2 lower berths, private bathroom.

CATEGORY 4 TWIN EXTERIOR

Deck 4 (10): Porthole window (unobstructed view), 2 lower berths, private bathroom.

Deck 5 (13): Window (unobstructed view), 2 lower berths, private bathroom.

CATEGORY 4A SINGLE PORTHOLE

Deck 4 (6): Porthole window (unobstructed view), 2 lower berths, private bathroom.

CATEGORY 5 TWIN WINDOW

Deck 7 (14): Picture window (obstructed view), 2 lower berths, refrigerator, private bathroom.

Deck 8 (8): One or two windows (partially or fully obstructed), double bed, refrigerator, private bathroom.

CATEGORY 6 COMFORT TWIN

Deck 4 (18): Porthole windows (unobstructed view), 2 lower berths + sofa bed, refrigerator, one or two private bathrooms.

CATEGORY 7 SELECT TWIN

Deck 5 (7): Picture windows (unobstructed view), 2 lower berths + sofa bed, refrigerator, one or two private bathrooms.

CATEGORY 8 SUPERIOR TWIN/ DOUBLE

Deck 5 (4): Picture window (unobstructed view), 2 lower berths, refrigerator, private bathroom.

Deck 7 (6): Picture window (unobstructed view), double bed, refrigerator, private bathroom.

CATEGORY 9 JUNIOR SUITE

Deck 5 & 7 (4): Picture window (unobstructed view), double bed, sitting area, refrigerator, private bathroom.

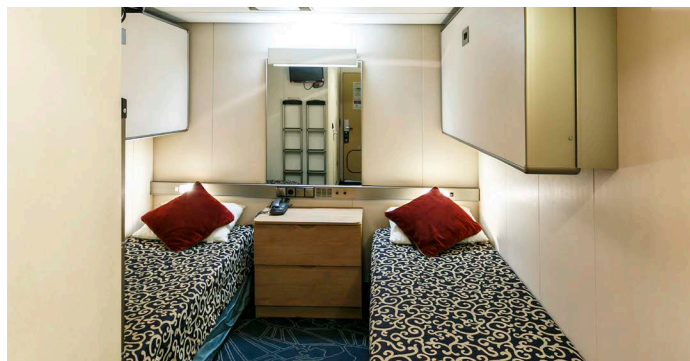
CATEGORY 10 OWNER SUITE

Deck 7 (1): Two large windows (unobstructed view) overlooking the bow, double bed, separate sitting area and private bathroom with tub.

INSIDE THE OCEAN ENDEAVOUR

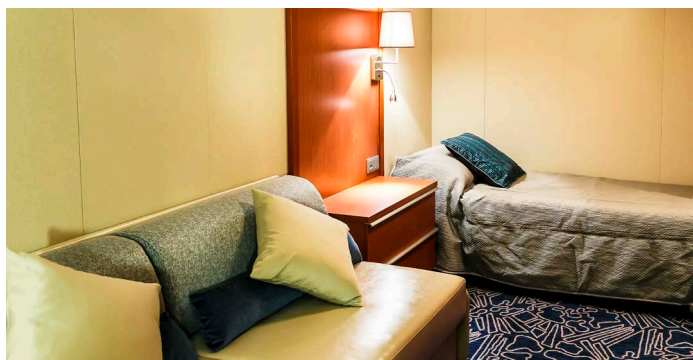
Often recommended for its unrivalled sense of space, the Ocean Endeavour has plenty of open and airy communal areas that allow travellers to bask in the unrivalled beauty of passing polar scenery.

Housing 10 different categories of cabin, the Ocean Endeavour appeals to clients of all ages and budgets. From smaller single occupancy cabins (with no single supplement) to larger double suites, there's plenty of choice. All cabins also come with a hairdryer, bathrobe(s), climate control, a TV, radio and safe.



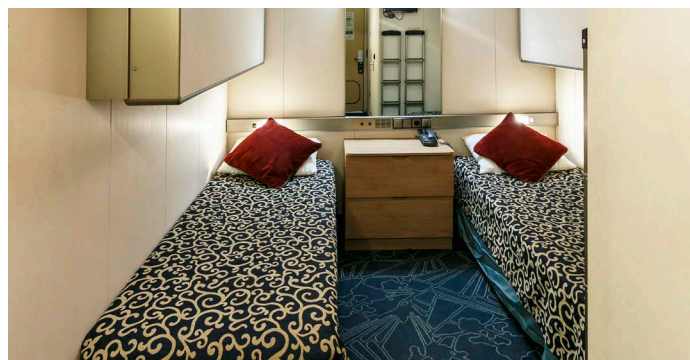
● CATEGORY 1 | SINGLE INTERIOR

- Located on Deck 5
- Two lower berths
- A private bathroom
- No porthole or window



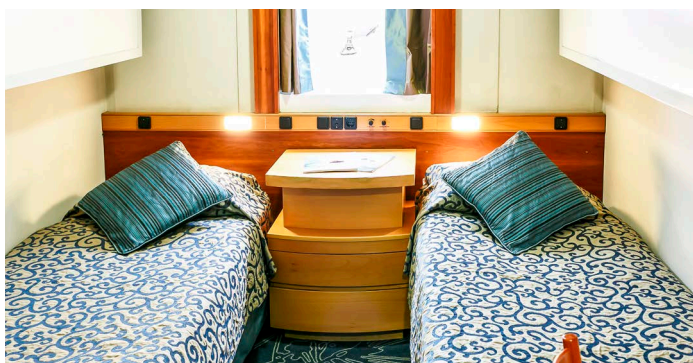
● CATEGORY 2 | TRIPLE INTERIOR

- Located on the Deck 4
- Three lower berths
- One or two private bathrooms
- No porthole or window



● CATEGORY 3 | TWIN INTERIOR

- Located on Deck 4
- Two lower berths
- A private bathroom
- No porthole or window



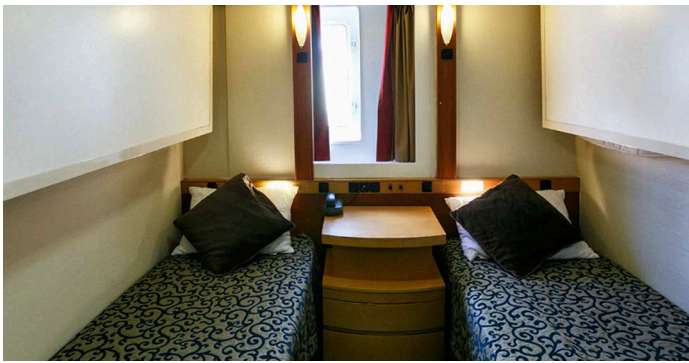
● CATEGORY 4 | TWIN EXTERIOR

- Located on the Deck 4 and 5
- Two lower berth
- A private bathroom
- One porthole or window, unobstructed view



● CATEGORY 4A | SINGLE PORTHOLE

- Located on the Deck 4
- One lower berth
- One porthole
- A private bathroom



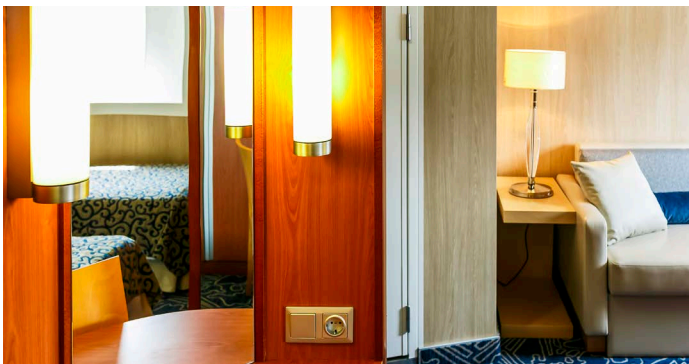
● **CATEGORY 5** | TWIN WINDOW

- Located on Deck 7 or 8
- Two lower berths/twin or double beds
- A private bathroom
- Picture window



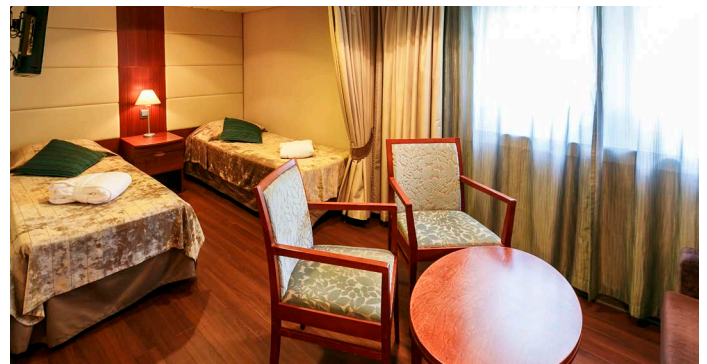
● **CATEGORY 6** | COMFORT WINDOW

- Located on Deck 4
- Two lower berths
- One or two private bathrooms
- Seperate seating area
- Two portholes



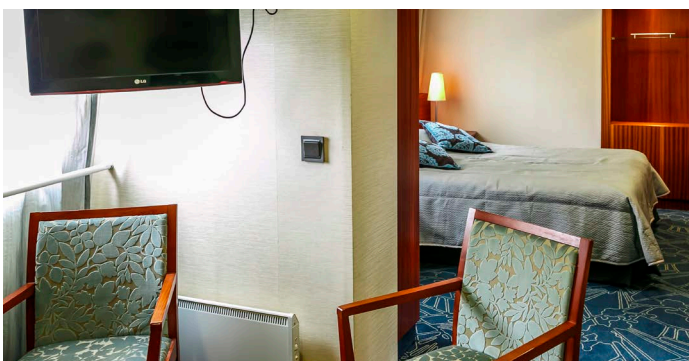
● **CATEGORY 7** | SELECT TWIN

- Located on Decks 5
- Two lower berths
- One or two private bathrooms
- Seperate seating area
- Large picture window



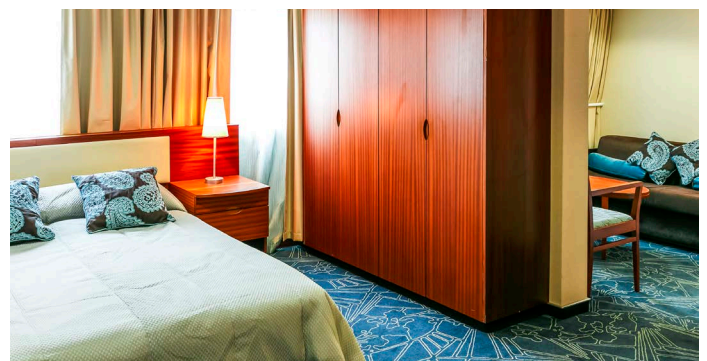
● **CATEGORY 8** | SUPERIOR TWIN/DOUBLE

- Located on Decks 5 and 7
- Two lower berths/twin or double beds
- A private bathroom
- Seperate seating area
- Large picture window



● **CATEGORY 9** | JUNIOR SUITE

- Located on Decks 5 and 7
- One double bed
- A private bathroom, some have bath tubs
- Seperate seating area
- Large picture windows



● **CATEGORY 10** | OWNER'S SUITE

- Located on Deck 7
- One double bed
- A private bathroom with a bath tub
- Seperate seating area
- Forward facing picture windows

COMMON AREAS



COMPASS CLUB



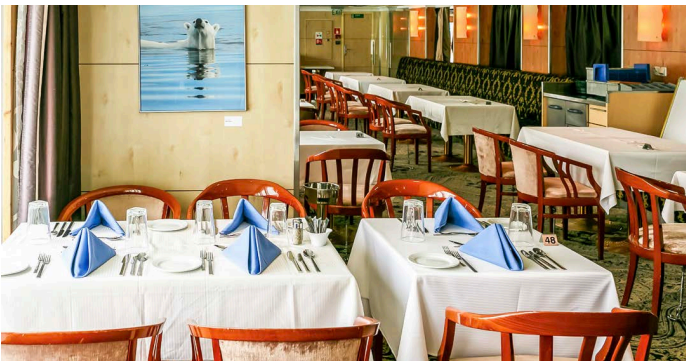
AURORA LOUNGE



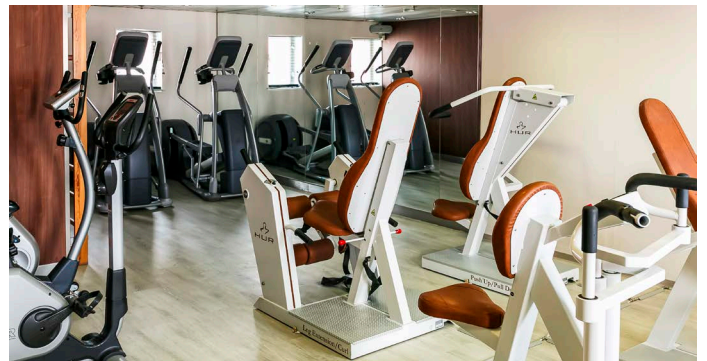
MERIDIAN CLUB



OUTER DECK



POLARIS RESTAURANT



GYM



MUD ROOM



JACUZZI